



西安交通大学  
XI'AN JIAOTONG UNIVERSITY

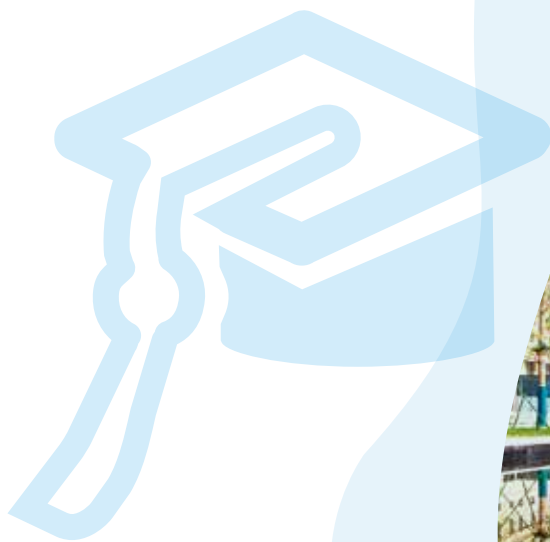
*XI'AN JIAOTONG UNIVERSITY*

**SCHOLARSHIPS PROGRAMS FOR**

# **POSTGRADUATE STUDIES**

---

2022



# XJTU

Xi'an Jiaotong University (XJTU), established in 1896, is the national key University directly administered by the Ministry of Education of China. It is the top 10 Research University in China and member of China's Ivy League --- C9 League. It was ranked No. 290 on the list of QS World University Rankings 2022.

XJTU is a comprehensive research university with **9 major categories of disciplines**: science, engineering, medicine, economics, management, humanities, law, philosophy, and art, and 27 schools, 9 colleges for undergraduates and **3 affiliated hospitals**. There are **four campuses**, namely Xingqing campus, Yanta campus, Qujiang campus and China Western Science and Technology Innovation Harbor, with a total area of 5.33 million square meters.

The University has a faculty and staff of 6538 people including 3,729 full-time teachers, of whom **44 are academicians** of the Chinese Academy of Sciences and/or the Chinese Academy of Engineering. The University now has 46323 full-time students, including 26941 postgraduates.

XJTU offers 90 undergraduate majors, and there are 32 first-level disciplines authorized to confer doctorate degrees, and 41 disciplines authorized to confer master's degrees. It also offers English-taught bachelor's programs, master's as well as doctorate programs in different disciplines.

According to the data released by Essential Science Indicators (ESI), engineering programs of XJTU is ranked **top 1‰** on the

ESI list, other 16 disciplines of XJTU are ranked **top 1%** on the ESI list in 2021. Its **Management School and Law School are accredited for the QS FIVE STARS** respectively in 2016 and in 2018. 14 disciplines are ranked top ten in China, such as Electrical Engineering, Mechanical Engineering, Power Engineering and Engineering Thermophysics, Materials Science, Electronics and Information Engineering, etc.

XJTU established extensive international communication ties with about 300 universities and research institutions from 44 countries and regions. It initiated the University Alliance of the Silk Road and built an international platform of educational cooperation and communication for more than 150 universities of 37 countries and regions.

Adhering to the principle of Chinese characteristics and striving to be the world-class, XJTU is committed to cultivating outstanding talents who advocate science, seek for innovation, and have a strong sense of responsibility and global vision. As of 2020, there were a total of 2891 international students from 134 countries studying in XJTU, among whom 2659 were degree-pursuing students, including 1106 undergraduates, 893 masters and 660 doctoral students. Due to its outstanding education quality, the University was awarded by the Ministry of Education of China as the "**Demonstration Base for International Education**".

The University is located in Xi'an—the geographical center of China, the starting city of Silk Road as well as the capitals of 13 dynasties in Chinese history. It is not only home to Terra Cotta Warriors and Horses and Huashan Mountain but also home to more than 100 world top 500 companies' branches. It is a hub of AI, aerospace, biotechnology, photoelectric chip, information technology, new materials, new energy, intelligent manufacturing etc. Its brilliant History, glorious culture, high-end technology and friendly environment for realizing the dreams bring Xi'an into one of the most selected destinations for study in China.

**Welcome to apply for XJTU!**

*School Motto: Diligent in Study, Persistent in Ambition, Determined in Action, Competent in Work*



## Application Schedule

**Online application:** November 15th- March 15th

**Deadline for payment:** March 18th

## Duration of Program

**Master's degree:** 2 ~ 3 years

**Doctoral degree:** 3 ~ 6 years

The university may decide to add one year Chinese language study prior to the academic study according to the applicants' Chinese language proficiency.

## Scholarships

### 1. **CSC-Chinese University Program**

A waiver of tuition fee, Free on-campus dormitory accommodation, Monthly living allowance, Comprehensive Medical Insurance for International Students in China.

It only supports master's students for no more than 3 academic years or doctoral students for no more than 4 academic years, and it covers both major study and Chinese language/preparatory study, as specified in the Admission Letter.

### 2. **XJTU Siyuan International Student Scholarship**

A waiver of tuition fee, Monthly living allowance.

It supports master's students for 2 academic years or doctoral students for 3 academic years.

### 3. **XJTU-Xi'an City Government "Belt and Road" International Student Scholarship**

A waiver of tuition fee, Monthly living allowance.

It supports master's students for 2 academic years or doctoral students for 3 academic years.

#### **Notes:**

- Accommodation, comprehensive medical insurance are NOT included in XJTU Siyuan International Student Scholarship and XJTU-Xi'an City Government International Student Scholarship.
- All the scholarships laureates must take the **Scholarship Annual Review** to confirm the next year's scholarship status and/or level after being admitted.
- The Annual Review Result of Chinese Government Scholarship may result in the following scholarship status: funding, suspension or cancellation.
- The Annual Review Result of XJTU Siyuan International Student Scholarship and XJTU-Xi'an City Government "Belt and Road" International Student Scholarship may result in funding, suspension, cancellation or change of allowance level.

## Eligibility

- Applicants must be non-Chinese citizens with valid passports;
- Applicants must be in good health;
- Applicants for Master's degree must have a Bachelor's degree and be under 35 years of age, Applicants for Doctoral degree must have a Master's degree and be under 40 years of age;
- Applicants may not be in receipt of any other types of scholarship.

## Application Procedure

**Step 1.** Online application at CSC website at <http://www.campuschina.org/>. Download the completed Application Form for Chinese Government Scholarship, print and sign your name.

Program Type: B

Agency No. : 10698

**Step 2.** Online application at Xi'an Jiaotong University's International student application system at <http://isso.xjtu.edu.cn/recruit/login>

Please check VI. Application Documents for the detailed checklist and prepare corresponding documents.

**Step 3.** Pay the application fee.(The university will send Payment Notice for Application through system information/email to those who pass the initial review.)

**Step 4.** Application complete. Students should pay close attention to the application system and registered email; follow up the latest information such as academic review, pre-admission review, tuition payment and acceptance information, etc.

#### **Notes:**

- Application fee is 800RMB which is non-refundable.
- Online application is the only way to submit the application. Hard copies are unacceptable.



## Application Documents

All documents must be complete, true, and correct in either Chinese or English.

1. **Application Form for Chinese Government Scholarship**  
Downloaded after online application in CSC system.
2. **XJTU Application Form for International Students**  
Automatically formed after online application in XJTU system.
3. **Completed Original Physical Examination Record for Foreigners and Blood Test Report**  
The physical examination must cover ALL the items listed in form. The forms with incomplete records or without the suggestion and signature of the attending physician, official cross-edge stamp of the hospital or a sealed photograph of the applicant are invalid. Please select the appropriate time to take physical examination as the result is valid for only 6 months.
4. **Original Non-criminal Record**
5. **Original Highest Diploma and Its Notarized Copies**  
(Prospective diploma winners must submit official certificate from their current university.)
6. **Original transcripts in undergraduate or graduate period and their notarized copies**
7. **Recommendation Letters**  
Two original recommendation letters written by professors or associate professors. If applicants have already got provisional acceptance from professors at XJTU, please provide *Xi'an Jiaotong University Recommendation Letter from Potential Supervisor* as one of the two recommendation letters. The format can be downloaded at [http://sie.xjtu.edu.cn/en/Data\\_Download.htm](http://sie.xjtu.edu.cn/en/Data_Download.htm)

**SPECIAL ATTENTION FOR PHD APPLICANTS:** Some

schools require *Recommendation Letter from Potential Supervisor*. Please check the list online and the information of professors.

Degree Programs:

[http://sie.xjtu.edu.cn/en/Programs/Degree\\_Program/Doctoral\\_Program.htm](http://sie.xjtu.edu.cn/en/Programs/Degree_Program/Doctoral_Program.htm)

Professors information : <http://sie.xjtu.edu.cn/yxxx/dsxx.htm>

8. **A Study Plan or Research Proposal**  
Applicants must submit a written study plan or research proposal in English or Chinese, with a minimum of 800 words for Master degree and 1500 words for Doctoral degree.  
**SPECIAL ATTENTION FOR PHD APPLICANTS:** You are required to use the format of *Xi'an Jiaotong University Study Plan for Doctoral Degree Program* which can be downloaded at [http://sie.xjtu.edu.cn/en/Data\\_Download.htm](http://sie.xjtu.edu.cn/en/Data_Download.htm)
9. **Original Research Achievements and Notarized Copies**  
Applicants may submit published research papers, award certificates or other documents to prove their achievement and ability in academic research if any.
10. **Certificate of Language Proficiency**  
Chinese-taught programs: Report of HSK 4 180 points and above. Other language proficiency certificate is also acceptable upon approved by XJTU. Some programs require HSK5 180 points (Find at Programs List )  
English-taught programs: transcript of IELTS 6.0 and above, TOEFL 80 and above. Other language proficiency certificate is also acceptable upon approved by XJTU.
11. **Photocopy of Valid Ordinary Passport.**

**Notes:**

- a) No application documents mentioned above will be returned whether the application is successful or not.
- b) Incomplete Applications will be rejected.
- c) Notarized Chinese/English versions are required for documents with languages other than the two.

3. Applicants cannot change the major, study duration and teaching language once they get admitted.
4. The university will provide Admission Notice, JW201/202 form (Visa form) for the admitted applicants to applying for X visa to coming to China. Those who are with other types of visa will not be allowed for registration at XJTU.
5. Admitted applicants should register at XJTU strictly in accordance with the date, place prescribed on the Admission Notice (usually on September). Failure to do so within two weeks will result in the admission and scholarship status being invalid.
6. Please bring the original highest diploma and original Physical Examination Record for Foreigners and Blood Test Report when you come to XJTU for registration. If you fail to bring the documents or couldn't pass the verification, your admission and scholarship status will be canceled.

## Admission Notification

1. Admission will be given to the outstanding candidates based on the comprehensive review results of application documents, interview etc. The university will decide which scholarship or allowance level to be granted according to the ranking of comprehensive review results as well as the seats of each scholarship in that year.
2. Make sure your email, telephone number, postal address correctly be filled in the application system as they are key to get you contacted during the admission process. Failure to respond to the university in time as required may lead to automatic rejection.

# English-Medium Programs

# PROGRAMS LIST

## A

### Master's Programs

Generally 2 years, some 3 years.

**School of Materials Science and Engineering(3 Years):** Materials Science and Engineering

**School of Electronic Science and Engineering:** Electronic Science and Technology

**School of Computer Science and Technology:** Computer Science and Technology

**School of Microelectronics:** Electronic Science and Technology

**School of Information and Communications Engineering:** Information and Communications Engineering

**School of Automation Science and Technology:** Control Science and Engineering

**School of Law:** Law (Master of Laws in Chinese and International Business Law)

**School of Public Policy and Administration (3 Years):** Public Administration

**School of Management:** Management Science and Engineering, Business Administration

**School of Aerospace Engineering(3 Years):** Mechanics, Aeronautical and Astronautical Science and Technology

**School of Chemical Engineering and Technology(3 Years):** Chemical Engineering and Technology, Power Engineering and Engineering Thermophysics

**School of Mechanical Engineering:** Mechanical Engineering, Instrument Science and Technology

**Jinhe Economics Research Center:** Applied Economics, Theoretical Economics

**School of Finance and Economics:** Applied Economics, Theoretical Economics

**School of Marxism:** Marxist Theory (Study of China's Reform and Development)

**School of Energy and Power Engineering:** Power Engineering and Engineering Thermophysics, Nuclear Science and Technology

**Frontier Institute of Science and Technology:** Chemistry, Physics, Biomedical Engineering, Materials Science and Engineering

**School of Humanities and Social Science:** Master of Arts in Chinese Culture Studies

**School of Software(3 Years):** Computer Science and Technology

**School of Life Science(3 Years):** Biology, Biomedical Engineering

**School of Basic Medical, Health Science Center (3 Years):** Biology, Immunology, Human Anatomy, Histology and Embryology, Pathology and Pathophysiology, Pharmaceutical Engineering

**School of Public Health, Health Science Center (3 Years):** Epidemiology and Health Statistics, Child, Adolescent and Maternal Health, Nutrition and Food Hygiene, Public Health

**School of Pharmacy, Health Science Center (3 Years):** Pharmacology, Natural Medicinal Chemistry, Pharmacy Administration, Pharmacy (Professional degree)

**School of Forensic Medicine, Health Science Center (3 Years):** Forensic Medicine

**School of Nursing, Health Science Center (3 Years):** Nursing

**The First Affiliated Hospital of Xi'an Jiaotong University (3 Years)**

**(Professional degree):** Internal Medicine, Pediatrics, Geriatric Medicine, Neurology, Dermatology and Venereology, Emergency Medicine, Critical Care Medicine, General Medical, Rehabilitation and Physiotherapy, Surgery, Orthopaedics and Transmology, Obstetrics and Gynecology, Ophthalmology, Otorhinolaryngology, Anesthesiology, Clinicopathology, Clinical Laboratory Diagnostics, Oncology, Radiation oncology, Radiographic, Ultrasonic Medicine, Nuclear Medicine, Stomtological Medicine

**Hospital of Stomatology (3 Years):** Stomtological Medicine(Professional degree)

**The Second Affiliated Hospital of Xi'an Jiaotong University (3 Years)**

**(Professional degree):** Internal Medicine, Pediatrics, Geriatric Medicine, Neurology, Dermatology and Venereology, Emergency Medicine, Critical Care Medicine, General Medical, Rehabilitation and Physiotherapy, Surgery, Pediatric Surgery, Orthopaedics and Transmology, Obstetrics and Gynecology, Ophthalmology, Otorhinolaryngology, Anesthesiology, Clinicopathology, Clinical Laboratory Diagnostics, Oncology, Radiation oncology, Radiographic, Ultrasonic Medicine, Nuclear Medicine

**School of Electrical Engineering:** Electrical Engineering

## B

### Doctoral Degree Programs

Generally 3 years, some 4 years. Those with NO means Recommendation Letter from Potential Supervisor is NOT required.

**School of Materials Science and Engineering:** Materials Science and Engineering

**School of Electronic Science and Engineering:** Electronic Science and Technology

**School of Computer Science and Technology:** Computer Science and Technology

**School of Microelectronics (NO):** Electronic Science and Technology

**School of Information and Communications Engineering:** Information and Communications Engineering

**School of Automation Science and Technology:** Control Science and Engineering

**School of Law (NO):** Law (Master of Laws in Chinese and International Business Law)

**School of Public Policy and Administration (4 Years):** Public Administration

**School of Management(4 Years)(NO):** Management Science and Engineering, Business Administration (Direction: Accounting)

**School of Aerospace Engineering(4 Years):** Mechanics, Aeronautical and Astronautical Science and Technology

**School of Chemical Engineering and Technology (4 Years):** Chemical Engineering and Technology, Power Engineering and Engineering Thermophysics

**School of Mechanical Engineering:** Mechanical Engineering, Instrument Science and Technology

**Jinhe Center for Economics Research (NO):** Applied Economics

**School of Finance and Economics (NO):** Applied Economics

**School of Energy and Power Engineering:** Power Engineering and Engineering Thermophysics, Nuclear Science and Technology

**Frontier Institute of Science and Technology:** Chemistry, Physics, Biomedical Engineering, Materials Science and Engineering

**School of Software(4 Years):** Computer Science and Technology

**School of Life Science and Technology (4 Years):** Biology, Biomedical Engineering

**School of Mathematics and Statistics:** Mathematics, Statistics

**The School of Basic Medical, Health Science Center:** Physiology, Biochemistry and Molecular Biology, Cell Biology, Genetics, Biophysics, Immunology, Human Anatomy, Histology and Embryology, Pathology and Pathophysiology

**School of Public Health, Health Science Center:** Epidemiology and Health Statistics, Child, Adolescent and Maternal Health, Nutrition and Food Hygiene

**School of Pharmacy, Health Science Center:** Stomatologic Biomedicine, Medicinal Chemistry, Pharmaceutics, Pharmacognosy, Pharmaceutical Analysis, Pharmacology

**School of Forensic Medicine, Health Science Center:** Forensic Medicine, Immunology, Psychiatry and Mental Health

**School of Nursing, Health Science Center:** Nursing

**The First Affiliated Hospital of Xi'an Jiaotong University (Professional degree):** Internal Medicine, Pediatrics, Geriatric Medicine, Neurology, Dermatology and Venereology, General Medical, Rehabilitation and Physiotherapy, Surgery, Orthopaedics and Transmology, Obstetrics and Gynecology, Anesthesiology, Clinical Laboratory Diagnostics, Oncology, Radiation Oncology, Radiographic, Ultrasonic Medicine, Nuclear Medicine, Stomtological Medicine

**Hospital of Stomatology (3 Years):** Stomtological Medicine (Professional degree)

**The Second Affiliated Hospital of Xi'an Jiaotong University (3 Years)**

**(Professional degree):** Internal Medicine, Pediatrics, Neurology, Dermatology and Venereology, Critical Care Medicine, Rehabilitation and Physiotherapy, Surgery, Pediatric Surgery, Orthopaedics and Transmology, Ophthalmology, Otorhinolaryngology, Anesthesiology, Clinicopathology, Oncology, Radiation Oncology, Radiographic, Ultrasonic Medicine

**School of Electrical Engineering:** Electrical Engineering

# Chinese-Medium Programs

# A

## Master's Programs

Generally 3 years, some 2 years

**School of Materials Science and Engineering:** Materials Science and Engineering

**School of Computer Science and Technology:** Computer Science and Technology

**School of Cyber Science and Engineering:** Cyber Security

**School of Law (2 Years):** Law

**School of Chemistry:** Chemistry, Chemical Engineering and Technology, Materials and Chemistry

**School of Energy and Power Engineering:** Power Engineering and Engineering Thermophysics, Nuclear Science and Technology

**Frontier Institute of Science and Technology:** Chemistry, Physics, Biomedical Engineering, Materials Science and Engineering

**School of Human Settlements and Civil Engineering:** Architecture, Architecture (Professional degree), Environmental Science, Civil Engineering

**School of Humanities and Social Science:** Master of Arts in Chinese Culture Studies (2 Years), Philosophy, Sociology, Journalism and Communication, Design Studies

**School of Software:** Computer Science and Technology

**School of Foreign Studies:** Foreign Languages and Literatures

**School of Physics:** Physics, Materials Science and Engineering

**School of Journalism and New Media:** Journalism and Communication

# B

## Doctoral Degree Programs

Generally 3 years, some 4 years. Those with NO means Recommendation Letter from Potential Supervisor is NOT required.

**School of Materials Science and Engineering:** Materials Science and Engineering

**School of Computer Science and Technology:** Computer Science and Technology

**School of Cyber Science and Engineering:** Cyber Security

**School of Law:** Law

**School of Chemistry:** Chemistry

**School of Energy and Power Engineering:** Power Engineering and Engineering Thermophysics, Nuclear Science and Technology

**Frontier Institute of Science and Technology:** Chemistry, Physics, Biomedical Engineering, Materials Science and Engineering

**School of Human Settlements and Civil Engineering:** Earth and Built Environment Science and Engineering

**School of Humanities and Social Science (NO):** Philosophy, Social Development and Management

**School of Software (4 Years):** Computer Science and Technology

**School of Mathematics and Statistics:** Mathematics, Statistics

**School of Foreign Studies:** Systemic Studies of Language and Culture

**School of Physics(4 Years):** Physics, Materials Science and Engineering

**School of Journalism and New Media:** Journalism and Communication



## Contact Information

### Xinqing Campus

Admission Office for International Students  
School of International Education, Xi'an Jiaotong University  
No.28, Xianning West Road, Xi'an, Shaanxi, 710049, P.R. China

### China Western Science and Technology Innovation Harbor

Admission Office for International Students 1-2096, Building No.1, Iharbor  
E-mail: adm-sie@mail.xjtu.edu.cn / mbbs-adm@xjtu.edu.cn

 @studyatXJTU

 @studyatxjtu

 @International Admission Office-XJTU